

TENTATIVE SUBDIVISION MAP AMORUSO RANCH PHASE 1 - SUBPHASE B1

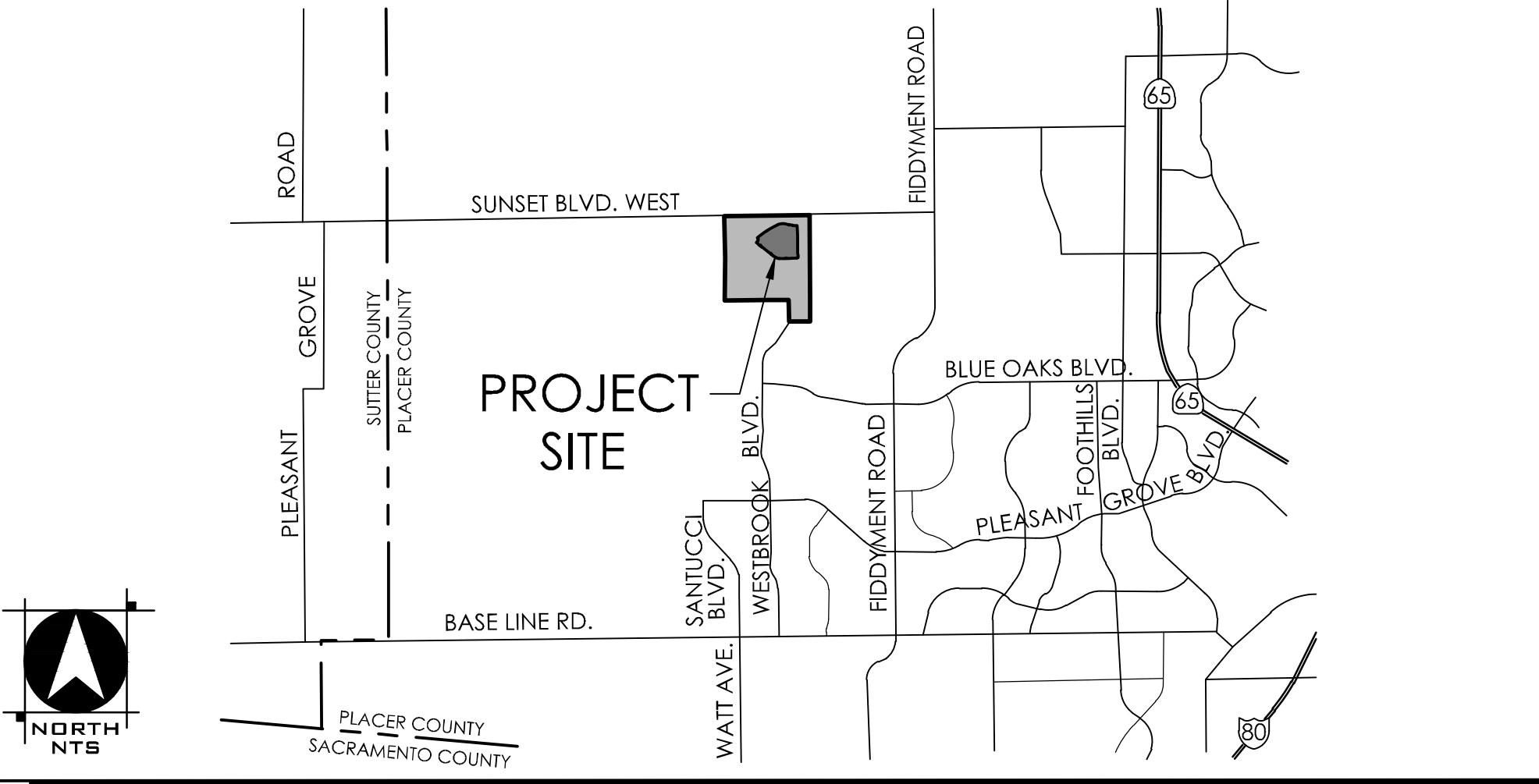
CITY OF ROSEVILLE, CALIFORNIA
JULY 28, 2025

PROJECT NOTES

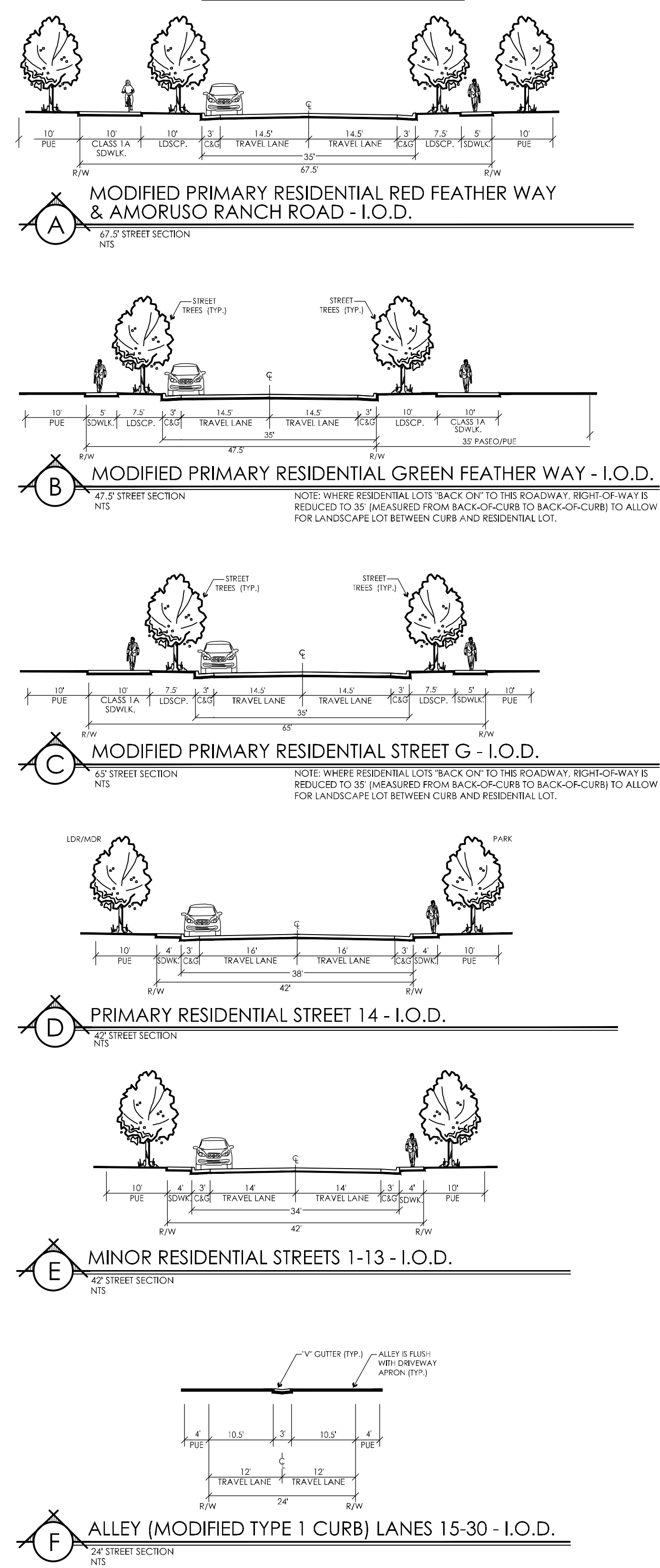
RECORD OWNER BROOKFIELD SUNSET LLC 2271 LAVA RIDGE CT. SUITE 220 ROSEVILLE, CA 95661 CONTACT: GONZALO RODRIGUEZ PHONE: (916) 206-0414	ASSESSOR'S PARCEL NUMBERS PARCELS WITH PROPOSED IMPROVEMENTS: 017-470-017, -020, -031, -037, -038, -039, -040, -041, -049, -053, -074, & -077. 496-780-036, -037, -040, & -041. OTHER INCLUDED PARCELS: 017-470-021, -027, -028, -064, -066 (PORTION), & -067.	EXISTING LAND USE LDR, MDR, HDR, P/R, P/QP, OS	SCHOOL DISTRICT ROSEVILLE CITY SCHOOL DISTRICT ROSEVILLE JOINT UNION HIGH SCHOOL DISTRICT
APPLICANT BROOKFIELD CALWEST BUILDERS LLC 2271 LAVA RIDGE CT. SUITE 220 ROSEVILLE, CA 95661 CONTACT: GONZALO RODRIGUEZ PHONE: (916) 206-0414	AREA 95.5 ± ACRES	PROPOSED LAND USE LDR, MDR, HDR, P/R, P/QP, OS	SEWER CITY OF ROSEVILLE
ENGINEER/PLANNER WOOD RODGERS INC. 3741 DOUGLAS BOULEVARD, SUITE 150 ROSEVILLE, CA 95661 CONTACT: PAUL KLEIN, PE #48367 VANICE JONES PHONE: (916) 341-7760	NUMBER OF LOTS 312 SINGLE FAMILY RESIDENTIAL LOTS 1 MDR LOT (FUTURE DEVELOPMENT) 1 HDR LOT (FUTURE DEVELOPMENT) 1 PARK LOT (FUTURE DEVELOPMENT) 1 SCHOOL LOT (FUTURE DEVELOPMENT) 7 OPEN SPACE LOTS 5 WATER QUALITY LOTS 1 COMMON GREEN LOT 4 LANDSCAPE LOTS 333 TOTAL LOTS	EXISTING ZONING RS, R3, PR, P/QP, & OS	STORM DRAIN CITY OF ROSEVILLE
		PROPOSED ZONING RS, R3, PR, P/QP, OS	WATER CITY OF ROSEVILLE
		PARKS AND OPEN SPACE CITY OF ROSEVILLE	ELECTRICITY CITY OF ROSEVILLE
		FIRE PROTECTION CITY OF ROSEVILLE	NATURAL GAS PG&E

- NOTE:**
- SUBDIVIDER(S) RESERVES THE RIGHT TO FILE MULTIPLE FINAL MAPS PURSUANT TO SECTION 66456.1 OF THE SUBDIVISION MAP ACT.
 - A 10' P.U.E. SHALL BE LOCATED ADJACENT TO ALL PUBLIC STREETS UNLESS OTHERWISE SHOWN ON THIS EXHIBIT.
 - MASTER PARCEL NUMBERING IS FOR IDENTIFICATION PURPOSES ONLY AND DOES NOT INDICATE PHASING ORDER OF DEVELOPMENT.
 - ALL EXISTING STRUCTURES TO BE REMOVED AND ALL EXISTING WELLS TO BE ABANDONED.
 - EXISTING TOPOGRAPHY PROVIDED BY OTHERS.
 - THIS IS AN APPLICATION FOR A DEVELOPMENT PERMIT.
 - THIS EXHIBIT IS FOR TENTATIVE MAP PURPOSES ONLY. ALL SITE CHARACTERISTICS ARE TO BE VERIFIED PRIOR TO FINAL MAP.
 - PURSUANT TO SECTION 66499.20.2 OF THE SUBDIVISION MAP ACT, THE LAND SHOWN HEREON IS HEREBY TO BE MERGED AND RE-SUBDIVIDED.
 - MASTER PARCEL LINES SHOWN HEREON ARE SUBJECT TO CHANGE AS ACCESS, PUBLIC UTILITIES AND/OR PHASING REQUIREMENTS DICTATE.
 - FUTURE PUBLIC LANDS, INCLUDING OPEN SPACE, DRAINAGE CHANNELS AND PARKS TO BE DEDICATED TO THE CITY AS AN IRREVOCABLE OFFER OF DEDICATION (IOD).
 - OFF-SITE DRAINAGE IMPROVEMENTS TO BE CONSTRUCTED PER AMORUSO RANCH SPECIFIC PLAN DRAINAGE STUDY AND DEVELOPMENT AGREEMENT.
 - PURSUANT TO SECTION 66499.20.2 OF THE SUBDIVISION MAP ACT THE PROPERTY WILL BE MERGED AND RE-SUBDIVIDED AND THE FOLLOWING PUBLIC EASEMENTS ARE TO BE ABANDONED: PORTION OF GENTLE RAIN DRIVE RIGHT OF WAY PER GG MAPS 81; PORTION OF PUBLIC UTILITY EASEMENT ADJACENT TO GENTLE RAIN DRIVE PER GG MAPS 81; IRREVOCABLE OFFER OF DEDICATION PER GG MAPS 49; RIGHT OF WAY PER GG MAPS 49; PUBLIC UTILITY EASEMENT PER GG MAPS 49; LANDSCAPE EASEMENT PER GG MAPS 49; BIKE TRAIL EASEMENT PER GG MAPS 49; LANDSCAPING PER GG MAPS 49; BUS STOP EASEMENT PER GG MAPS 49; AND PDS PER GG MAPS 49.

LOCATION MAP



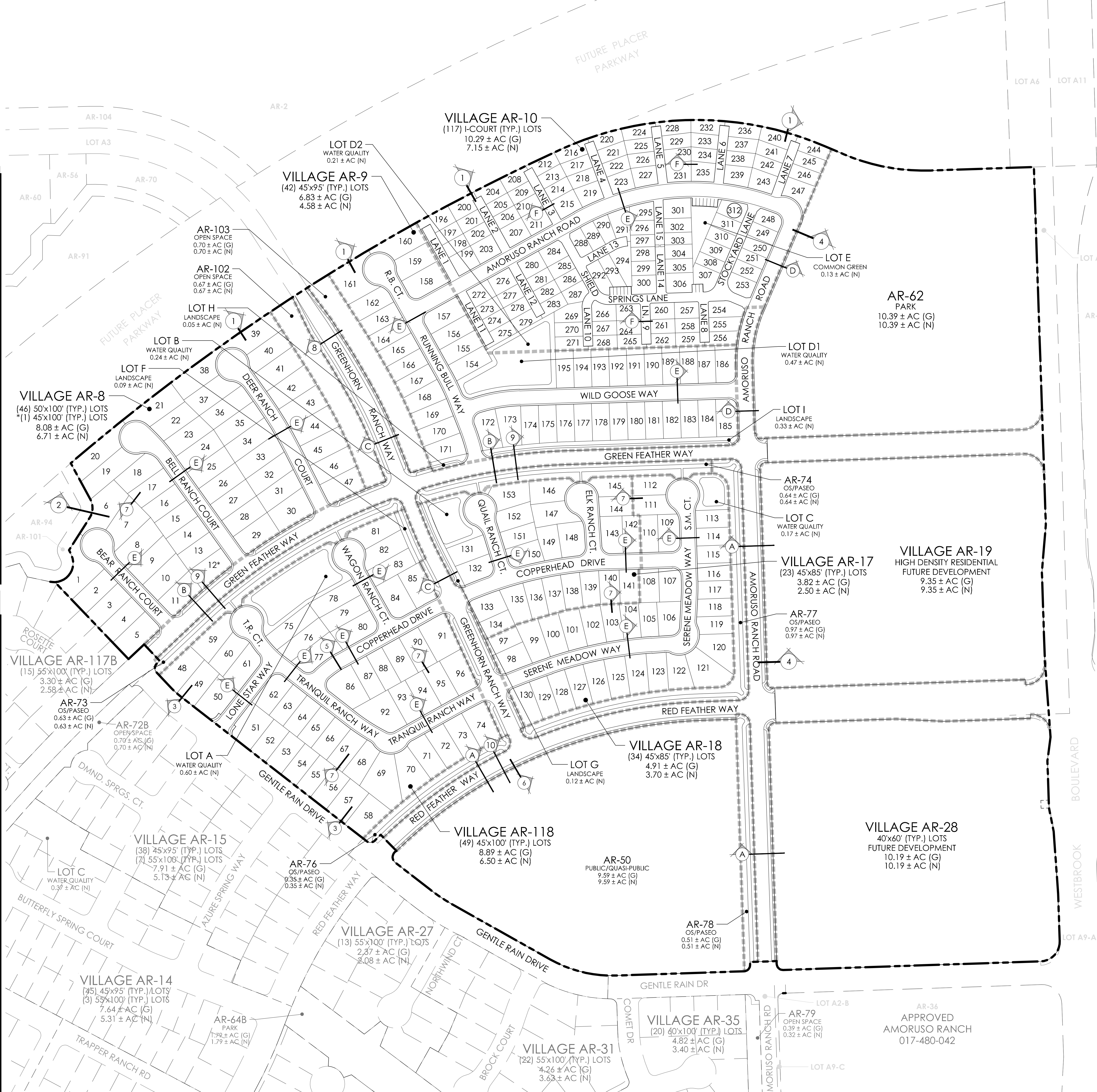
STREET SECTIONS



LAND USE SUMMARY

SPECIFIC PLAN PARCEL/LOT NO.	FINAL MAP LOT NO.	GENERAL PLAN DESIGNATION	SPECIFIC PLAN DESIGNATION	SMALL LOT NOS.	ZONING	LAND USE DESCRIPTION	MINIMUM LOT DIM.	DWELLING UNITS	GROSS ACRES	NET ACRES	DENSITY
AR-8	19	LDR	LDR	1-47	RS	LOW DENSITY RESIDENTIAL	50x100	46	8.06	6.71	3.8
AR-9	88	LDR	LDR	154-195	RS	LOW DENSITY RESIDENTIAL	45x100	1	-	-	-
AR-17	34	LDR	LDR	131-153	RS	LOW DENSITY RESIDENTIAL	45x100	23	3.82	2.30	4.0
AR-18	35	LDR	LDR	97-130	RS	LOW DENSITY RESIDENTIAL	45x100	34	4.91	3.20	4.9
AR-118	38, 39	LDR	LDR	46-94	RS	LOW DENSITY RESIDENTIAL	45x100	49	8.89	6.50	5.5
SUBTOTAL								175	32.53	23.99	
AR-10	25	MDR	MDR	196-312	RS	MEDIUM DENSITY RESIDENTIAL	31x61	117	10.29	7.15	11.4
AR-28	32	MDR	MDR		RS	MEDIUM DENSITY RESIDENTIAL	40x60	-	10.19	10.19	-
SUBTOTAL								117	20.48	17.34	
AR-19	33	HDR	HDR		R3	HIGH DENSITY RESIDENTIAL	-	-	9.35	9.35	-
SUBTOTAL								-	9.35	9.35	
AR-50	85	P/QP	P/QP			PUBLIC/QUASI-PUBLIC	-	-	9.59	9.59	-
AR-62	26	P/R	P/R			PARKS & RECREATION	-	-	10.29	10.29	-
AR-73	40	OS	OS			OS/PASEO	-	-	0.63	0.63	-
AR-74	90	OS	OS			OS/PASEO	-	-	0.64	0.64	-
AR-76	37	OS	OS			OS/PASEO	-	-	0.35	0.35	-
AR-77	34	OS	OS			OS/PASEO	-	-	0.97	0.97	-
AR-78	86	OS	OS			OS/PASEO	-	-	0.51	0.51	-
AR-102	22	OS	OS			OS/PASEO	-	-	0.67	0.67	-
AR-103	87	OS	OS			OS/PASEO	-	-	0.70	0.70	-
MAJOR ROW 1*						RIGHT-OF-WAY	-	-	6.14	6.14	-
MAJOR ROW 2**						RIGHT-OF-WAY	-	-	2.52	2.52	-
SUBTOTAL								-	38.11	38.11	
TOTAL								312	95.47	95.47	
								DU	AC	AC	

- NOTES:**
- NET ACREAGE EXCLUDES MINOR RIGHT-OF-WAYS, WATER QUALITY LOTS, AND LANDSCAPE LOTS.
 - THIS PORTION OF MAJOR RIGHT-OF-WAY PORTION OF GREEN FEATHER WAY, RED FEATHER WAY, ROAD G, AMORUSO RANCH ROAD, & OF STREET 14 WILL BE INCLUDED IN SUBPHASE B1 IMPROVEMENTS.
 - (*) THIS PORTION OF MAJOR RIGHT-OF-WAY (PORTION OF GREEN FEATHER WAY & RED FEATHER WAY) WILL NOT BE INCLUDED IN SUBPHASE B1 IMPROVEMENTS.



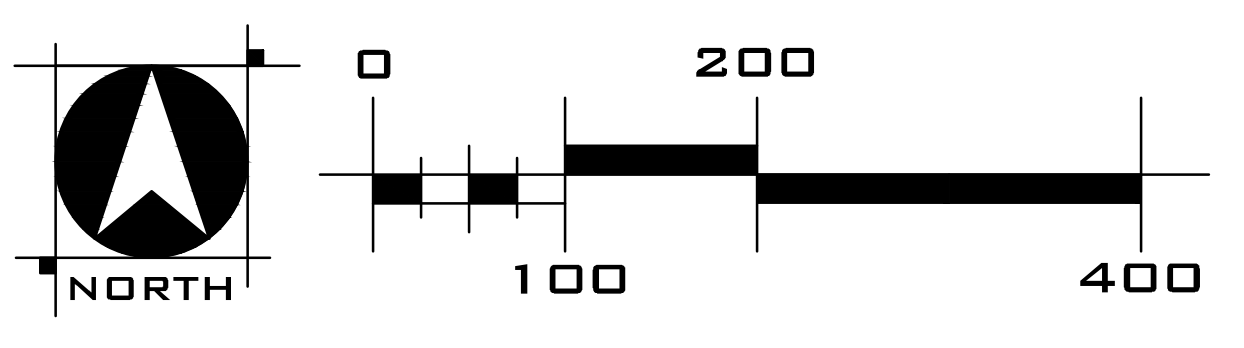
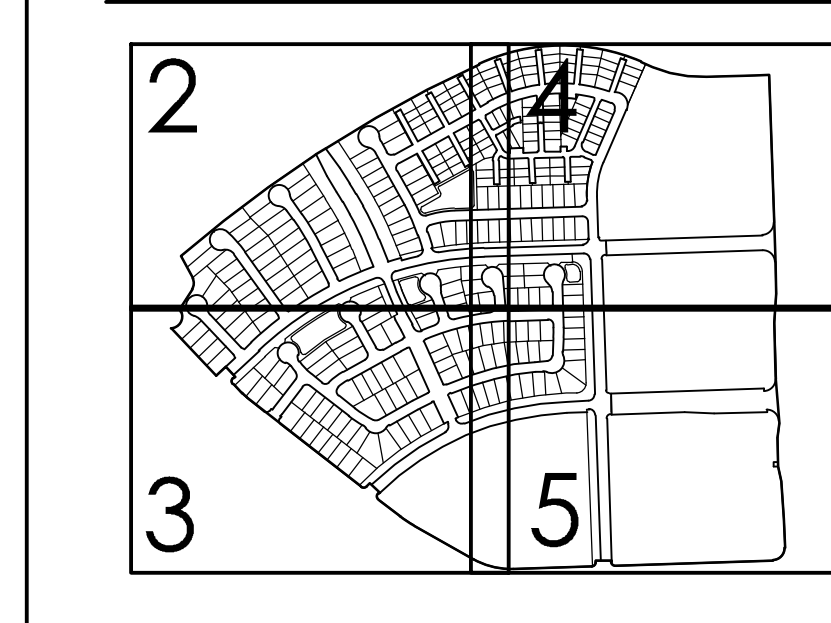
LEGEND

PROJECT BOUNDARY	--- --	PUE (TYP)	---	SEWER MAIN	— 8" —	DRAIN INLET	— 8" —
VILLAGE LOT LINE	---	VILLAGE BOUNDARY	---	SEWER MANHOLE	— 8" —	WATER MAIN	— 8" —
RIGHT-OF-WAY	---	TOP BACK OF CURB	---	DRAINAGE MAIN	— 12" —	GATE VALVE	— 8" —
STREET CENTERLINE	---	SIDEWALK	---	DRAINAGE MANHOLE	— 12" —	FIRE HYDRANT	— 8" —
PROPOSED LOTS	---	LIP OF CURB	---				

SHEET INDEX

1	COVER SHEET - LOTTING LAYOUT	1"=100'
2	TENTATIVE SUBDIVISION MAP	1"=40'
3	TENTATIVE SUBDIVISION MAP	1"=40'
4	TENTATIVE SUBDIVISION MAP	1"=40'
5	TENTATIVE SUBDIVISION MAP	1"=40'

SHEET INDEX DIAGRAM



WOOD RODGERS
DEVELOPING INNOVATIVE DESIGN SOLUTIONS
3741 Douglas Blvd., Ste. 150
Roseville, CA 95661
Tel 916.341.7760
Fax 916.341.7767

CITY APPROVAL STAMP

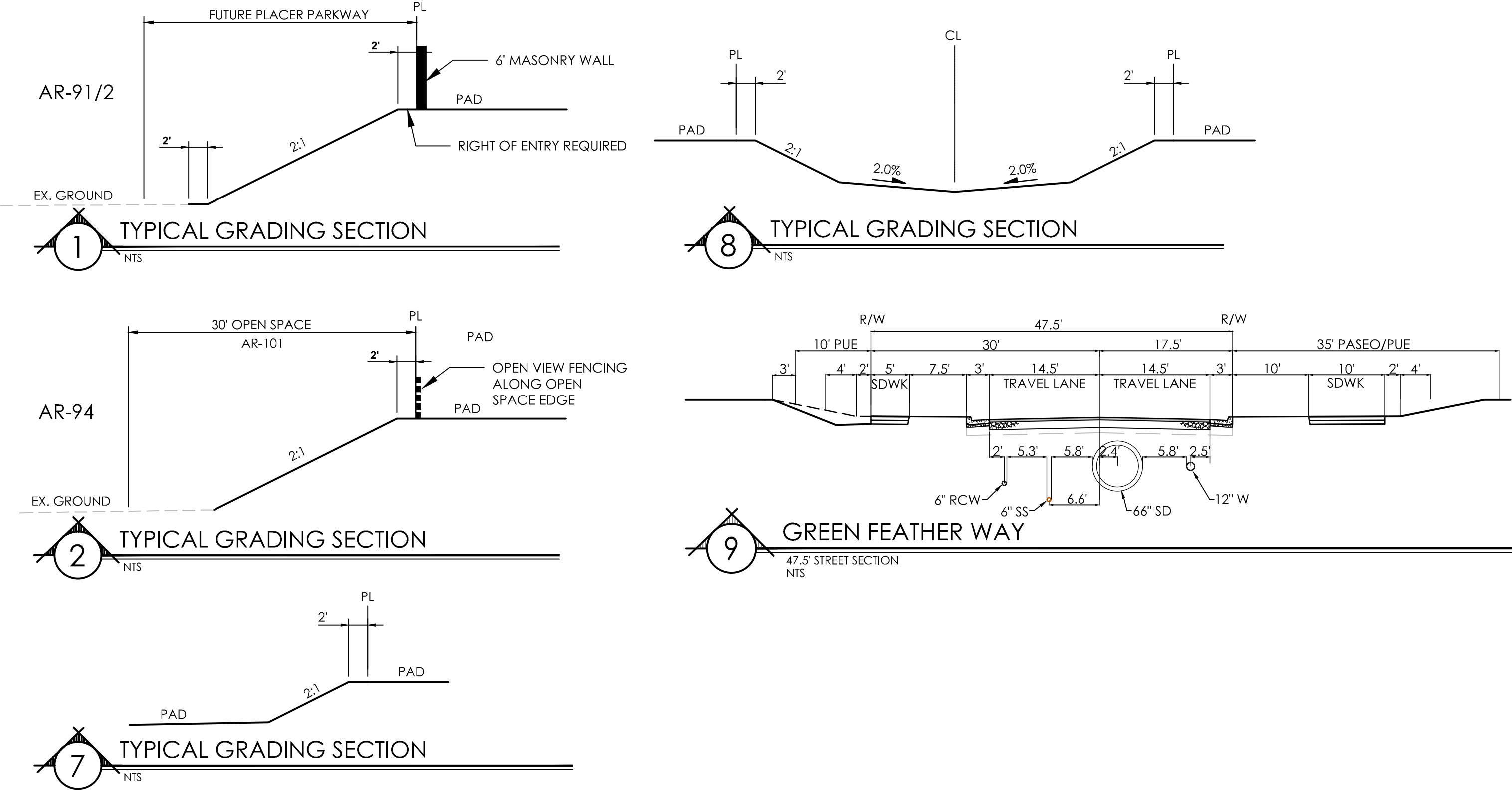
TENTATIVE SUBDIVISION MAP AMORUSO RANCH PHASE 1 - SUBPHASE B1

CITY OF ROSEVILLE, CALIFORNIA
JULY 28, 2025

LEGEND

PROJECT BOUNDARY	PUE (TYP)	SEWER MAIN	DRAIN INLET
VILLAGE LOT LINE	VILLAGE BOUNDARY	SEWER MANHOLE	WATER MAIN
RIGHT-OF-WAY	TOP BACK OF CURB	DRAINAGE MAIN	GATE VALVE
STREET CENTERLINE	SIDEWALK	DRAINAGE MANHOLE	FIRE HYDRANT
PROPOSED LOTS	UP OF CURB		

BOUNDARY GRADING & UTILITY SECTIONS



APPROVED AMORUSO RANCH
017-470-071

VILLAGE AR-8
(46) 50'x100' (TYP.) LOTS
(1) 45'x100' (TYP.) LOTS
8.08 ± AC (G)
6.71 ± AC (N)

VILLAGE AR-9
(43) 45'x95' (TYP.) LOTS
6.83 ± AC (G)
4.58 ± AC (N)

VILLAGE AR-10
(117) I-COURT (TYP.) LOTS
10.29 ± AC (G)
7.15 ± AC (N)

AR-103
OPEN SPACE
0.70 ± AC (G)
0.70 ± AC (N)

AR-102
OPEN SPACE
0.67 ± AC (G)
0.67 ± AC (N)

APPROVED AMORUSO RANCH
017-470-044

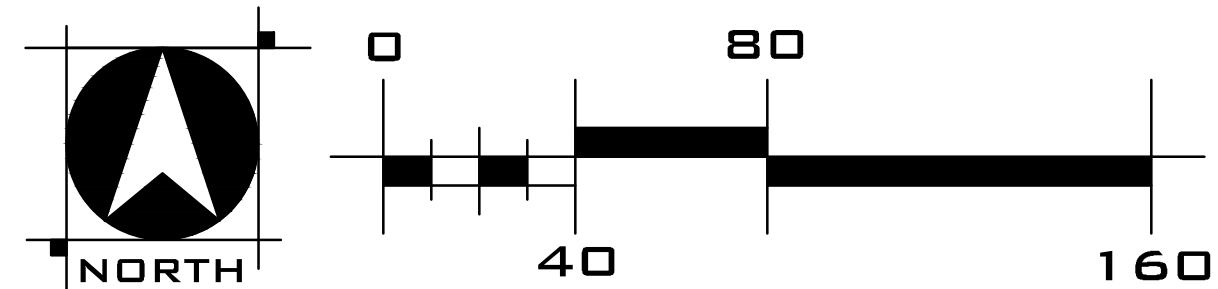
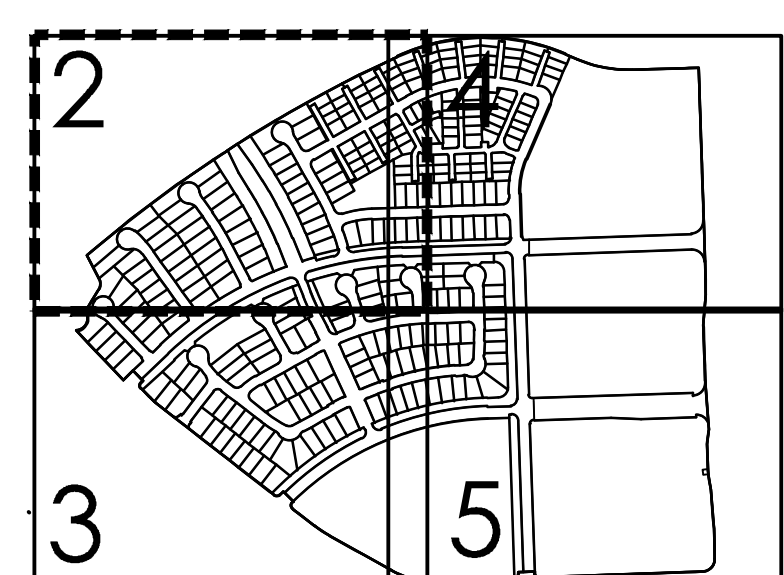
LOT D2
WATER QUALITY
0.21 ± AC (G)

LOT H
LANDSCAPE
0.05 ± AC (N)

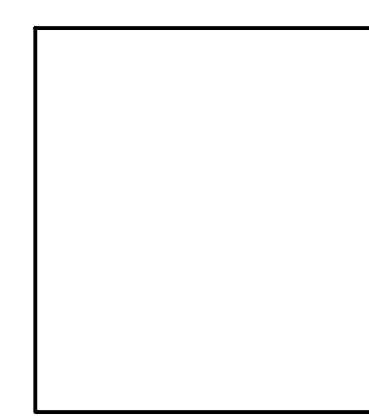
LOT I
LANDSCAPE
0.33 ± AC (N)

VILLAGE AR-17
(23) 45'x85' (TYP.) LOTS
3.82 ± AC (G)
2.50 ± AC (N)

SHEET INDEX DIAGRAM



WOOD RODGERS
DEVELOPING INNOVATIVE DESIGN SOLUTIONS
3741 Douglas Blvd., Suite 150
Roseville, CA 95661
Tel 916.341.7760
Fax 916.341.7767



TENTATIVE SUBDIVISION MAP AMORUSO RANCH PHASE 1 - SUBPHASE B1

CITY OF ROSEVILLE, CALIFORNIA
JULY 28, 2025

VILLAGE AR-8
(46) 50'x100' (TYP.) LOTS
(1) 45'x100' (TYP.) LOTS
8.08 ± AC (G)
6.71 ± AC (N)

SEE SHEET 2
13
P+95.1

LOT F
LANDSCAPE
0.09 ± AC (N)

LOT G
LANDSCAPE
0.12 ± AC (N)

VILLAGE AR-17
(23) 45'x85' (TYP.) LOTS
3.82 ± AC (G)
2.50 ± AC (N)

VILLAGE AR-18
(34) 45'x85' (TYP.) LOTS
4.91 ± AC (G)
3.70 ± AC (N)

AR-77
OPEN SPACE
0.97 ± AC (G)
0.97 ± AC (N)

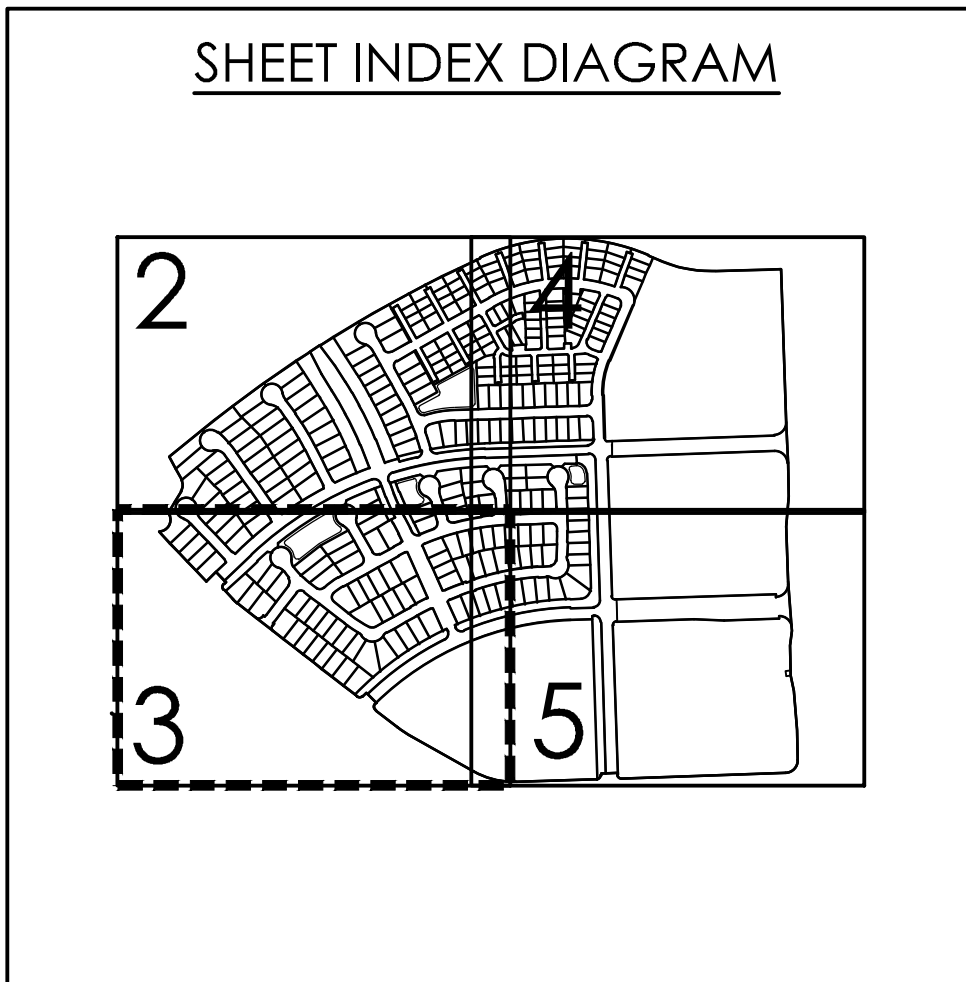
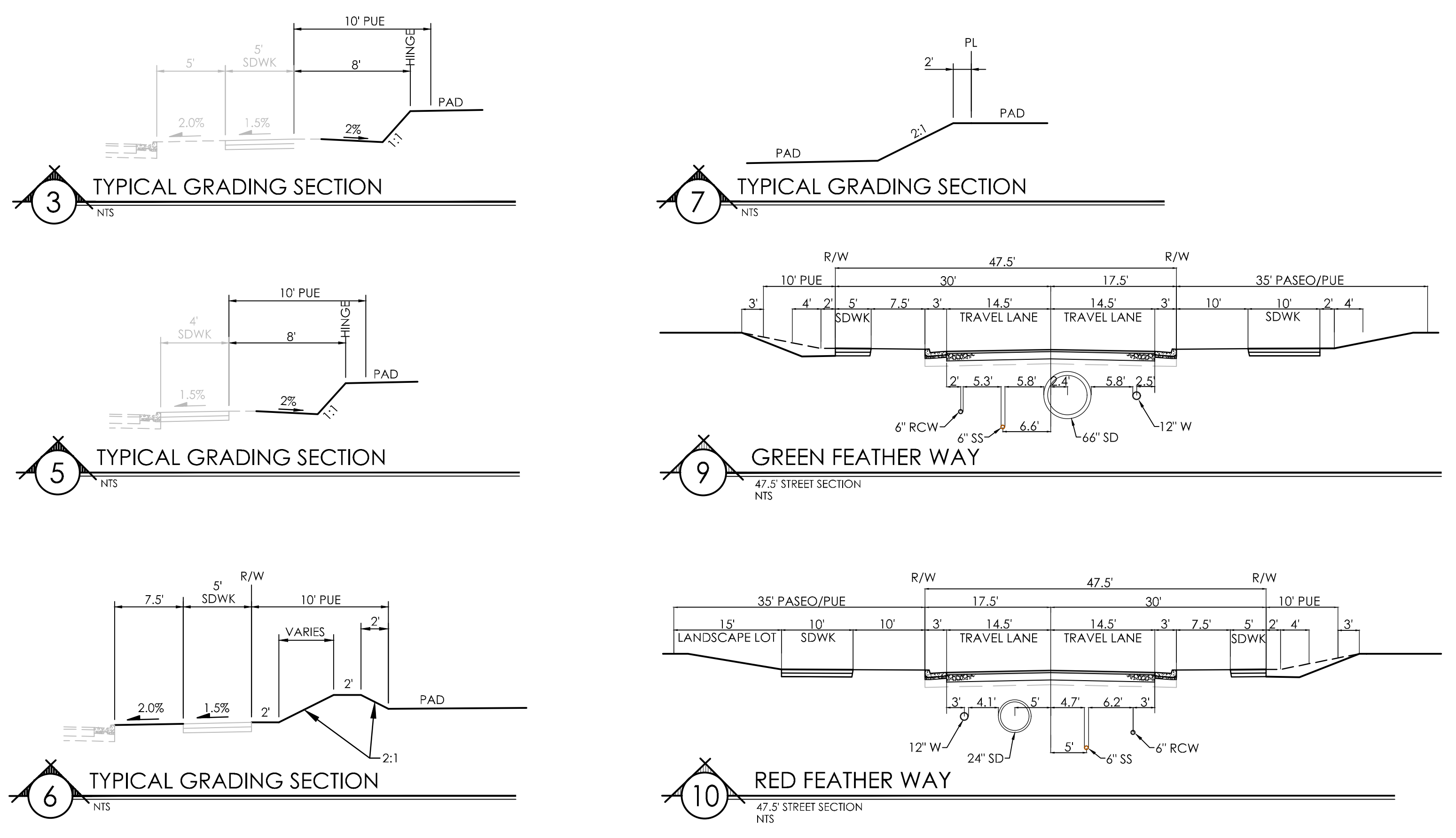
AR-50
PUBLIC/QUASI-PUBLIC
9.59 ± AC (G)
9.59 ± AC (N)

AR-76
OPEN SPACE
0.35 ± AC (G)
0.35 ± AC (N)

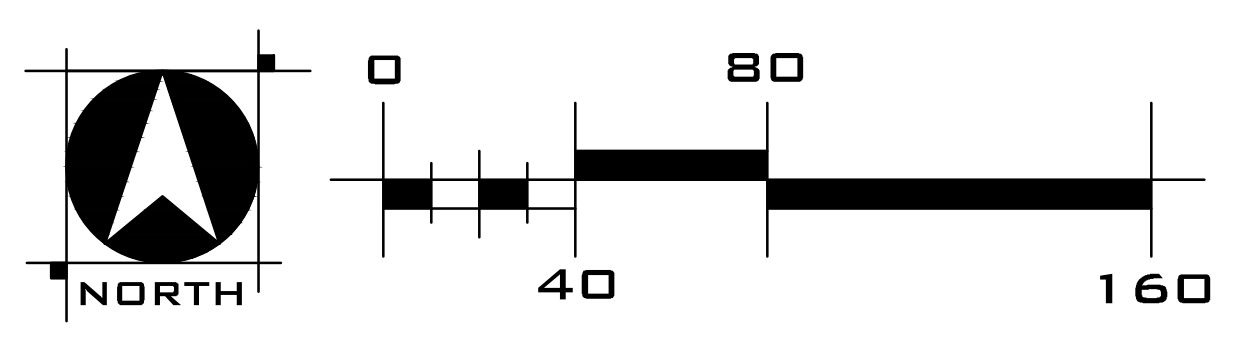
VILLAGE AR-118
(49) 45'x100' (TYP.) LOTS
8.89 ± AC (G)
6.50 ± AC (N)

AR-73
OPEN SPACE
0.63 ± AC (G)
0.63 ± AC (N)

BOUNDARY GRADING & UTILITY SECTIONS



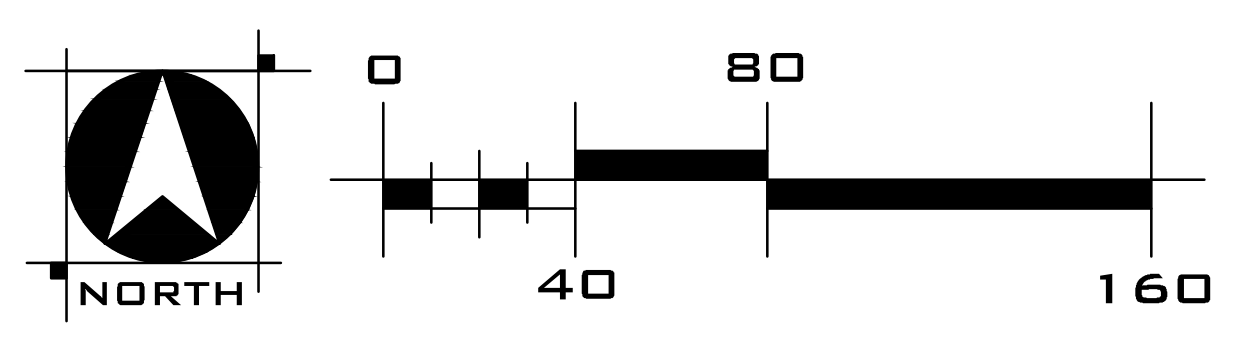
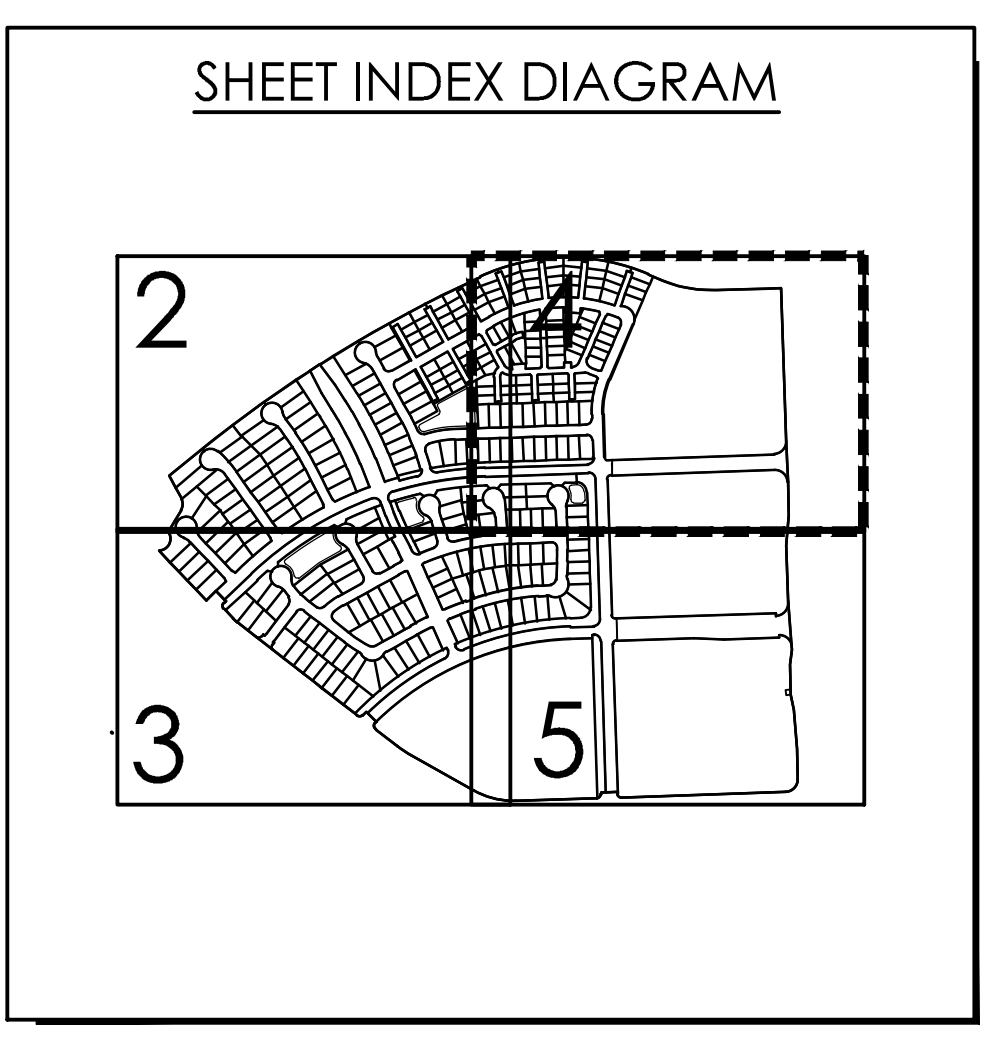
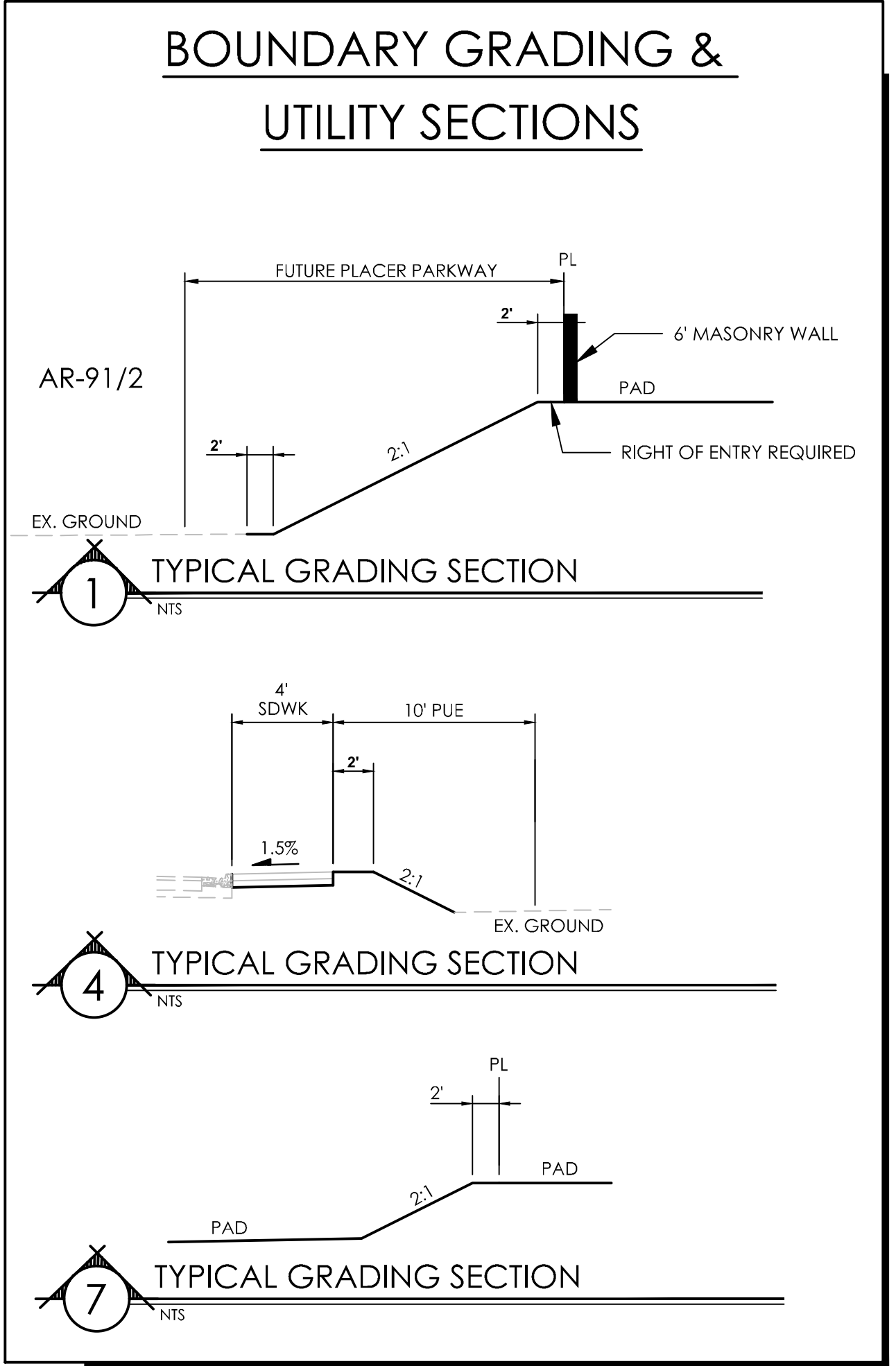
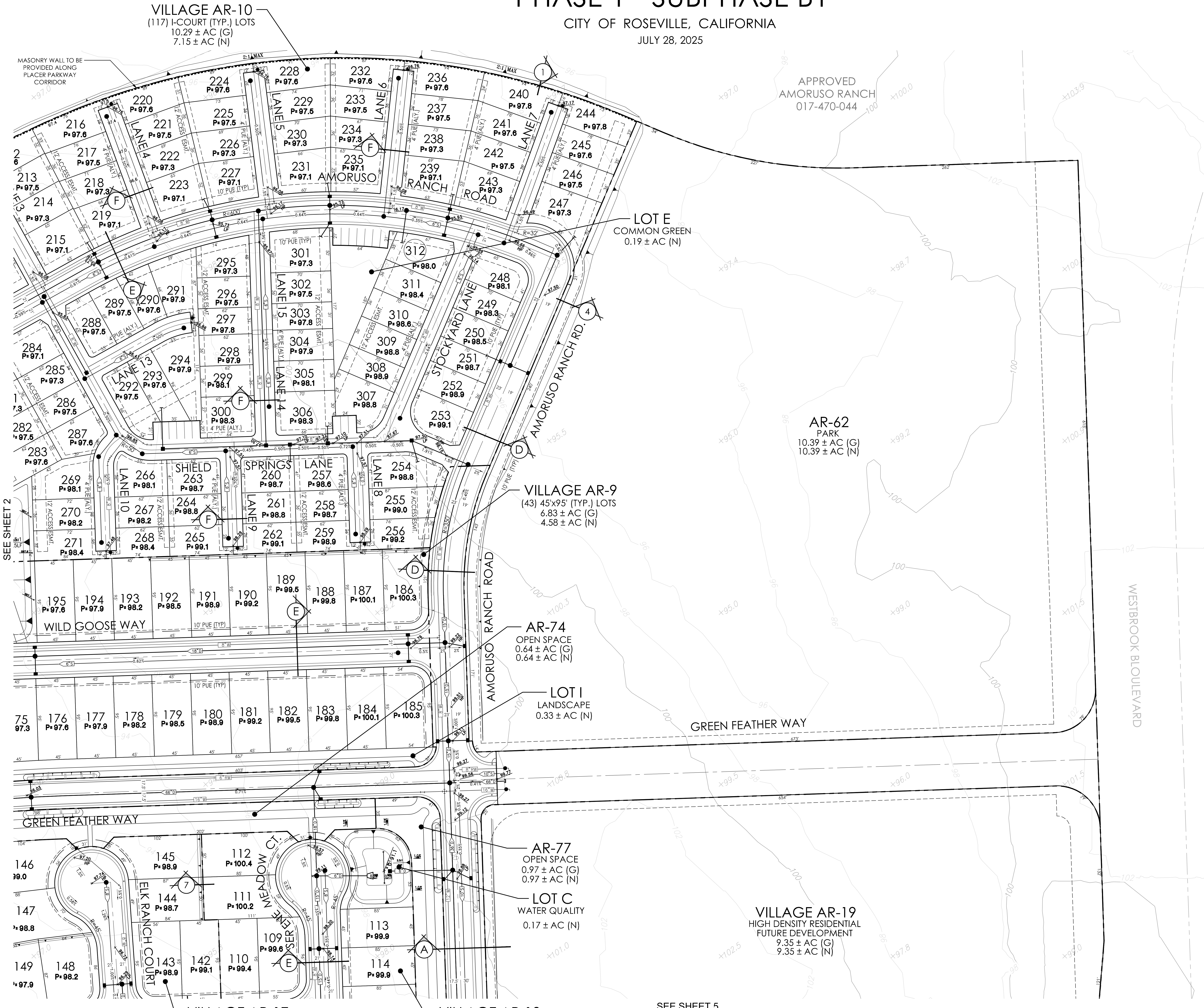
LEGEND			
PROJECT BOUNDARY	-----	PUE (TYP)	-----
VILLAGE LOT LINE	-----	VILLAGE BOUNDARY	-----
RIGHT-OF-WAY	-----	TOP BACK OF CURB	-----
STREET CENTERLINE	-----	SIDEWALK	-----
PROPOSED LOTS	-----	LIP OF CURB	-----
SEWER MAIN	-----	SEWER MANHOLE	●
DRAINAGE MAIN	-----	DRAINAGE MANHOLE	●
DRAIN INLET	-----	WATER MAIN	-----
GATE VALVE	-----	FIRE HYDRANT	-----



WOOD RODGERS
DEVELOPING INNOVATIVE DESIGN SOLUTIONS
3741 Douglas Blvd., Suite 150 Tel 916.341.7760
Roseville, CA 95661 Fax 916.341.7767
SHEET 3 OF 5

TENTATIVE SUBDIVISION MAP AMORUSO RANCH PHASE 1 - SUBPHASE B1

CITY OF ROSEVILLE, CALIFORNIA
JULY 28, 2025



LEGEND

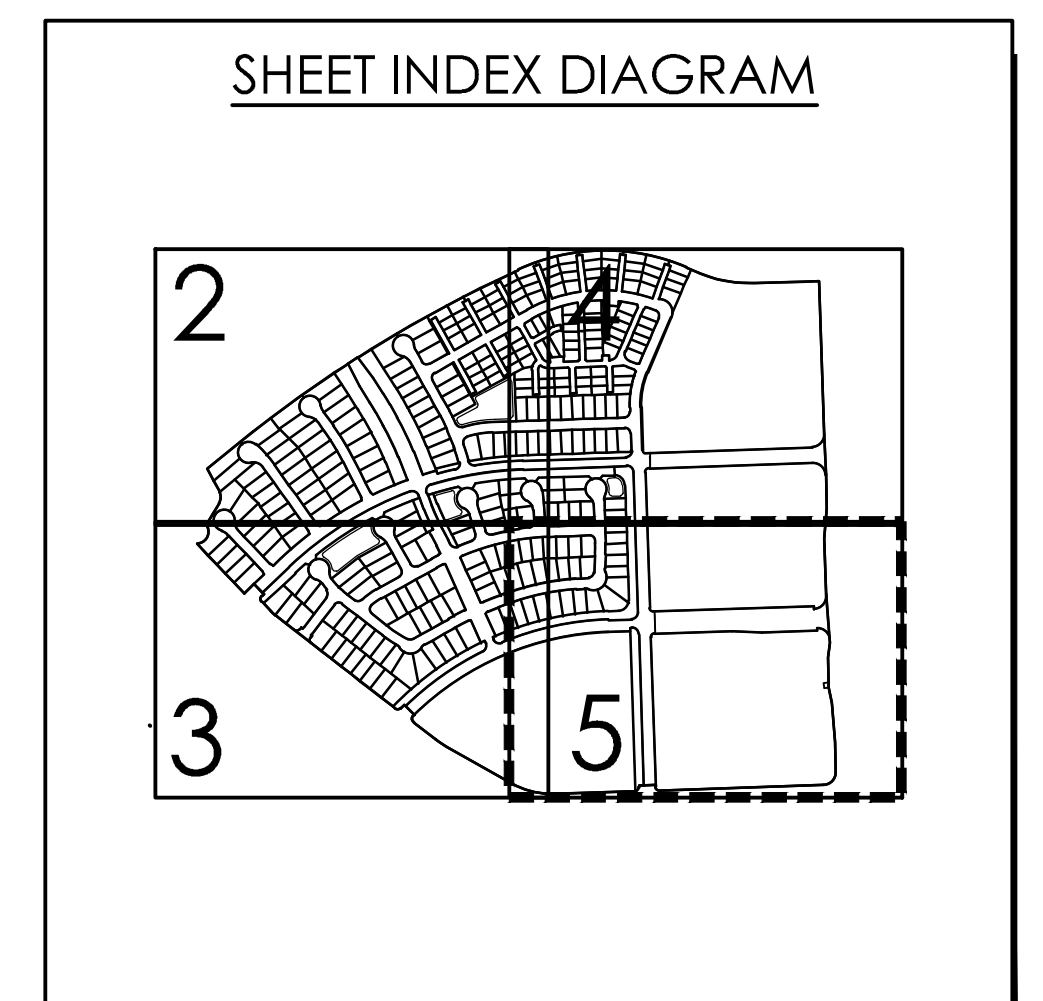
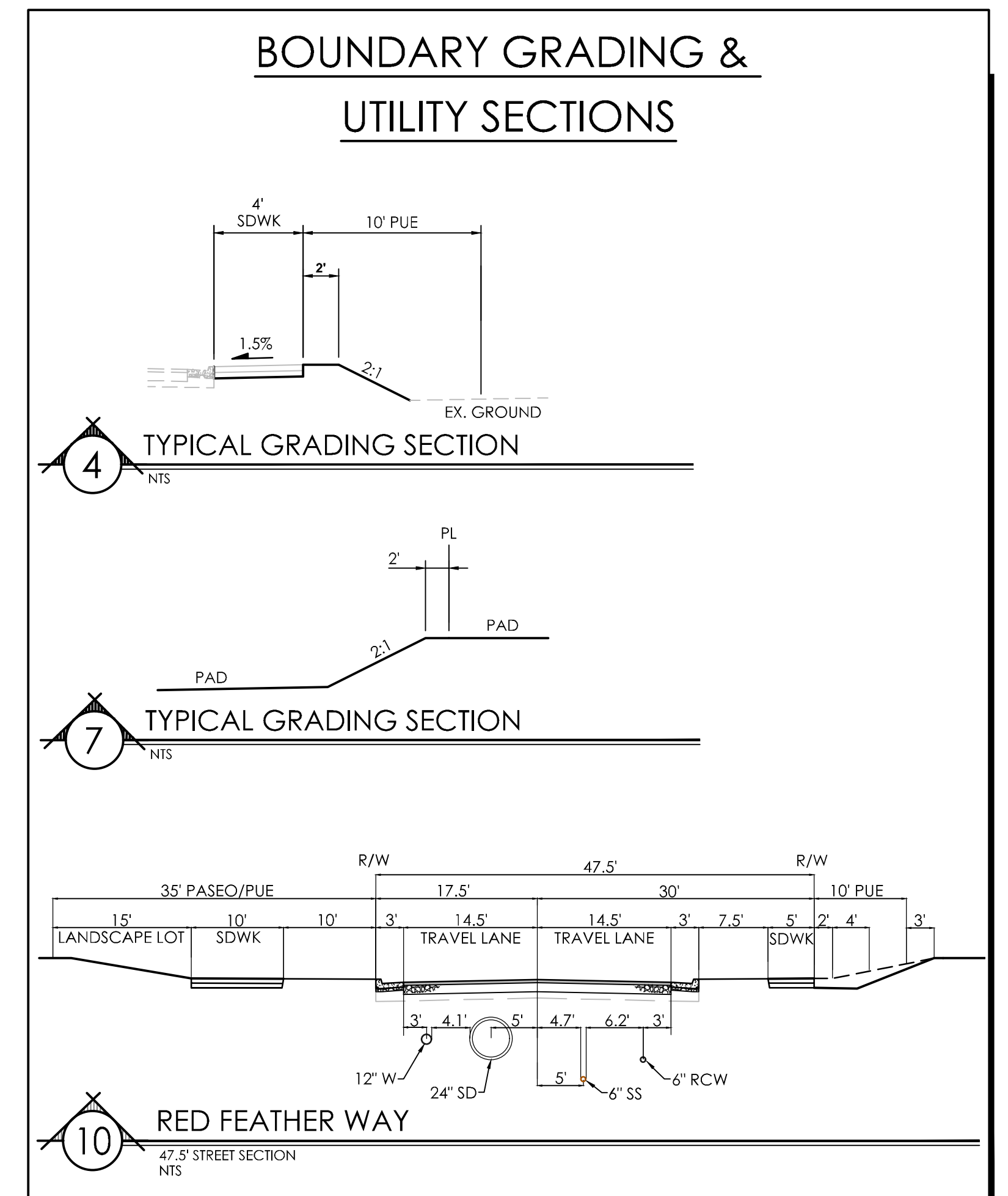
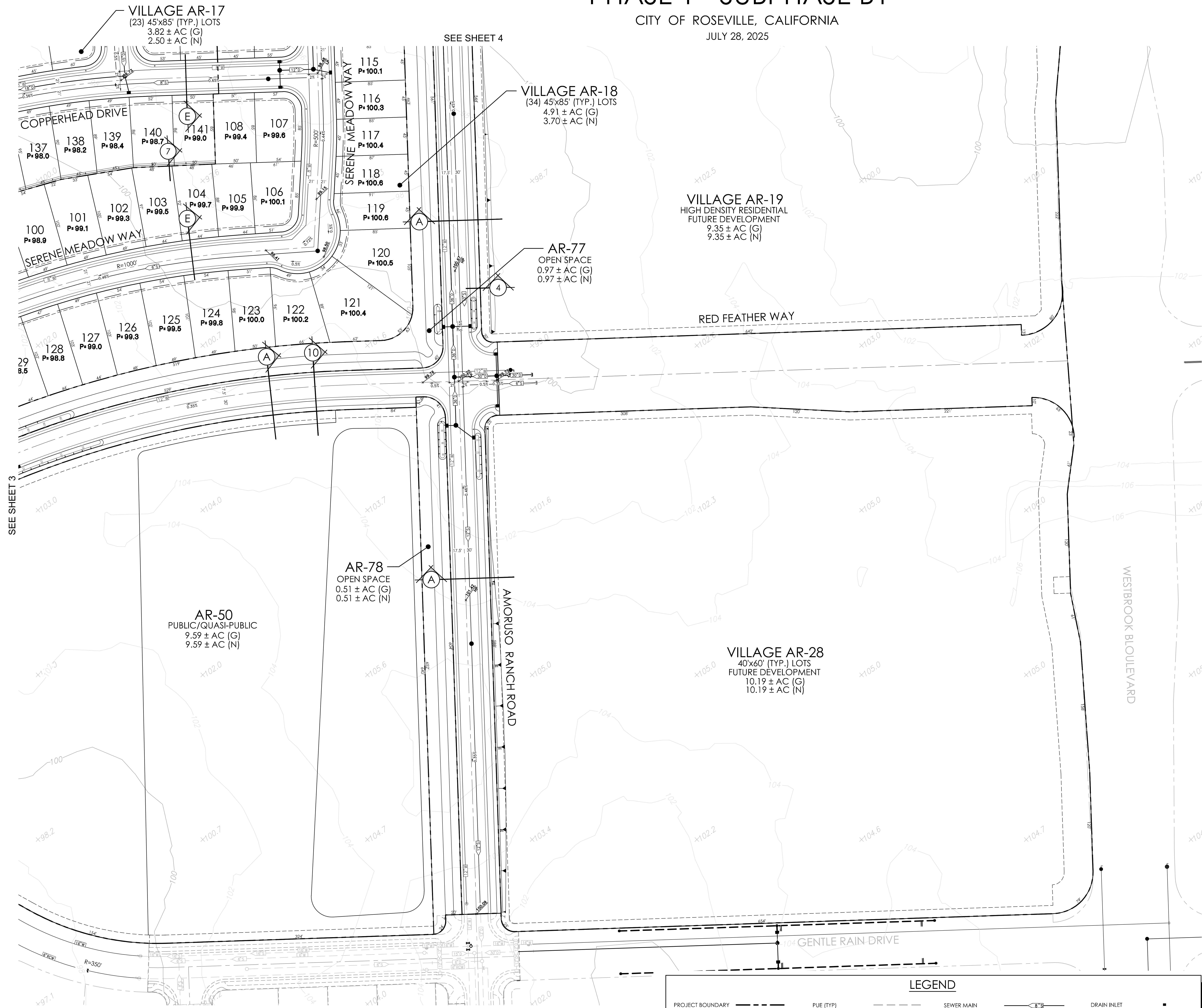
PROJECT BOUNDARY	-----	FUE (TYP)	-----	SEWER MAIN	— 8" —	DRAIN INLET	■
VILLAGE LOT LINE	-----	VILLAGE BOUNDARY	-----	SEWER MANHOLE	●	WATER MAIN	— 8" W —
RIGHT-OF-WAY	-----	TOP BACK OF CURB	-----	DRAINAGE MAIN	— 12" D —	GATE VALVE	⊥
STREET CENTERLINE	-----	SIDEWALK	-----	DRAINAGE MANHOLE	●	FIRE HYDRANT	⊥
PROPOSED LOTS	-----	LIP OF CURB	-----				

WOOD RODGERS
DEVELOPING INNOVATIVE DESIGN SOLUTIONS
3741 Douglas Blvd., Suite 150 Tel 916.341.7760
Roseville, CA 95661 Fax 916.341.7767

CITY APPROVAL STAMP

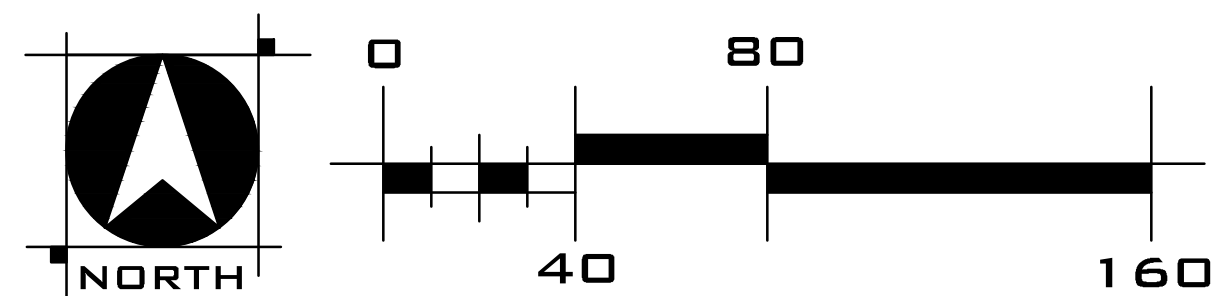
TENTATIVE SUBDIVISION MAP AMORUSO RANCH PHASE 1 - SUBPHASE B1

CITY OF ROSEVILLE, CALIFORNIA
JULY 28, 2025



LEGEND

PROJECT BOUNDARY	-----	PUE (TYP)	-----	SEWER MAIN	-----	DRAIN INLET	•
VILLAGE LOT LINE	-----	VILLAGE BOUNDARY	-----	SEWER MANHOLE	•	WATER MAIN	-----
RIGHT-OF-WAY	-----	TOP BACK OF CURB	-----	DRAINAGE MAIN	-----	GATE VALVE	•
STREET CENTERLINE	-----	SIDWALK	-----	DRAINAGE MANHOLE	•	FIRE HYDRANT	•
PROPOSED LOTS	-----	LIP OF CURB	-----				



WOOD RODGERS
DEVELOPING INNOVATIVE DESIGN SOLUTIONS
3741 Douglas Blvd., Suite 150 Tel 916.341.7760
Roseville, CA 95661 Fax 916.341.7767

CITY APPROVAL STAMP

SHEET 5 OF 5

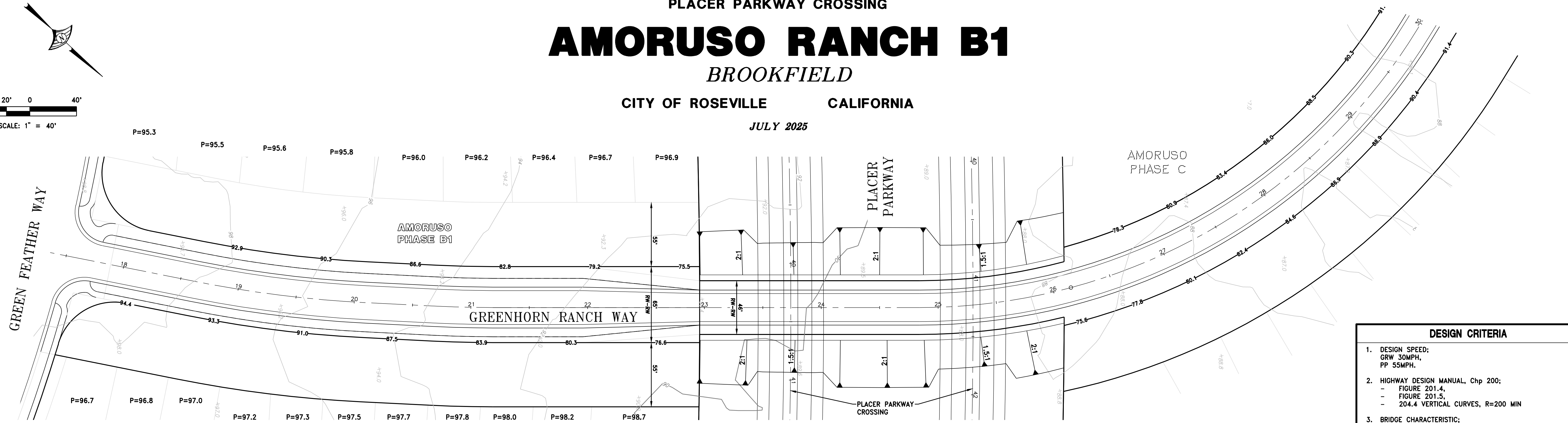
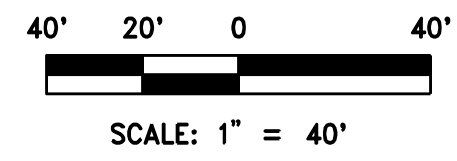
PLACER PARKWAY CROSSING

AMORUSO RANCH B1

BROOKFIELD

CITY OF ROSEVILLE CALIFORNIA

JULY 2025

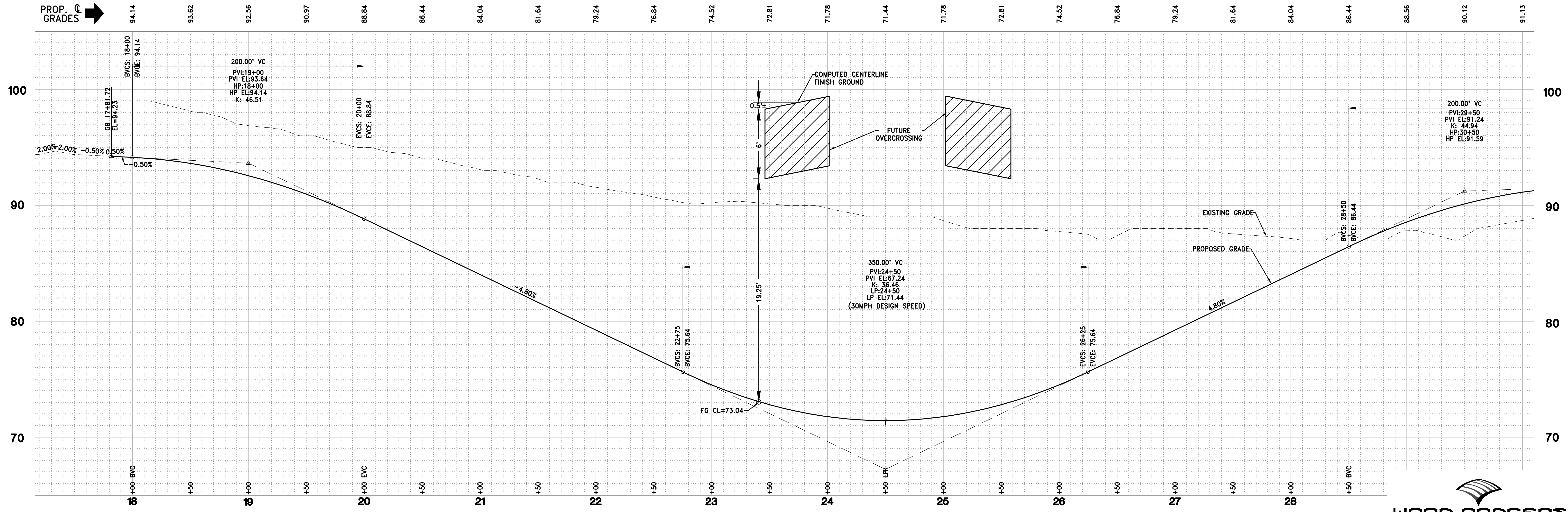


PLAN

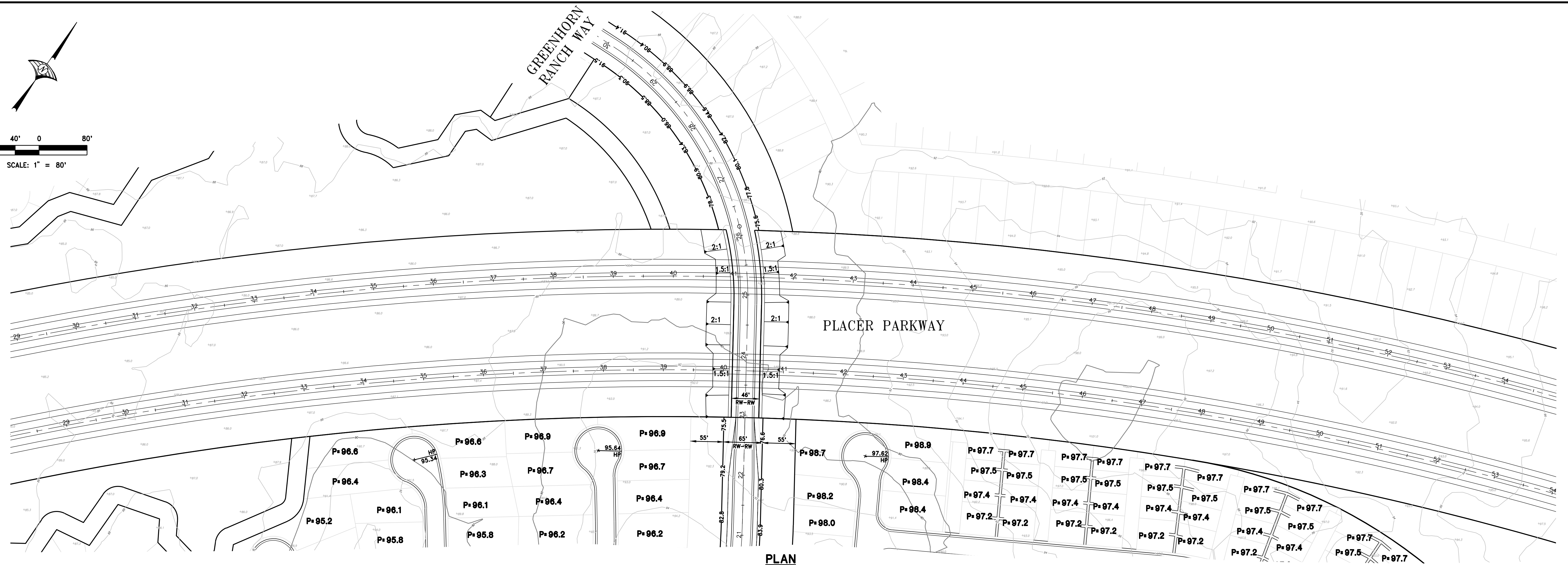
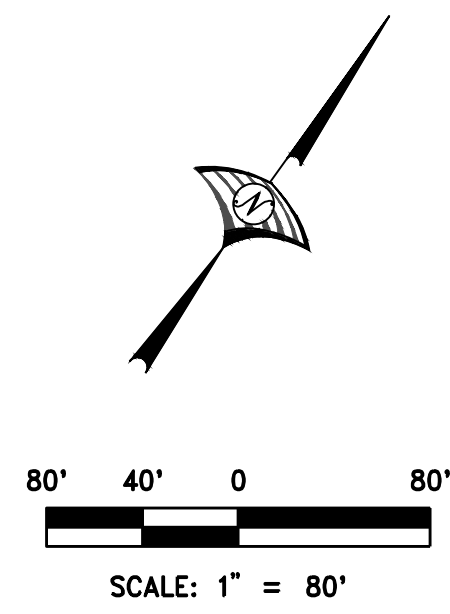
DESIGN CRITERIA	
1.	DESIGN SPEED: SRW 30MPH, PP 55MPH.
2.	HIGHWAY DESIGN MANUAL, Chp 200; - FIGURE 201.4, - FIGURE 201.5, - 204.4 VERTICAL CURVES, R=200 MIN
3.	BRIDGE CHARACTERISTIC; - 1.5:1 CONCRETE SIDE SLOPES, - SPAN DOES NOT EXCEED 125LF, - 0.045 LENGTH TO DEPTH RATIO, ~6' DEPTH - VERTICAL CLEARANCE, 15'-6" PLUS 3'-9"=19'-4"

GREENHORN RANCH WAY

PROP. GRADES

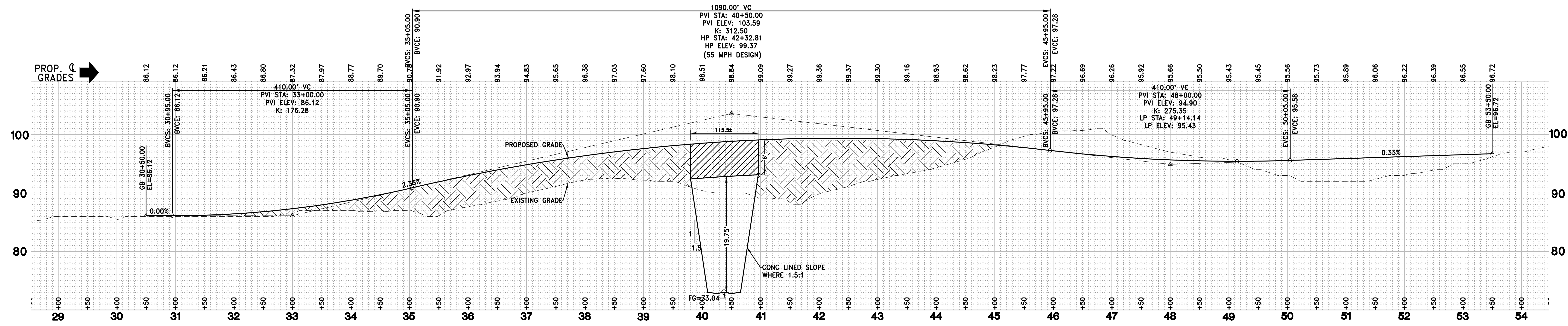


PROFILE



PLAN

PLACER PARKWAY



PROFILE

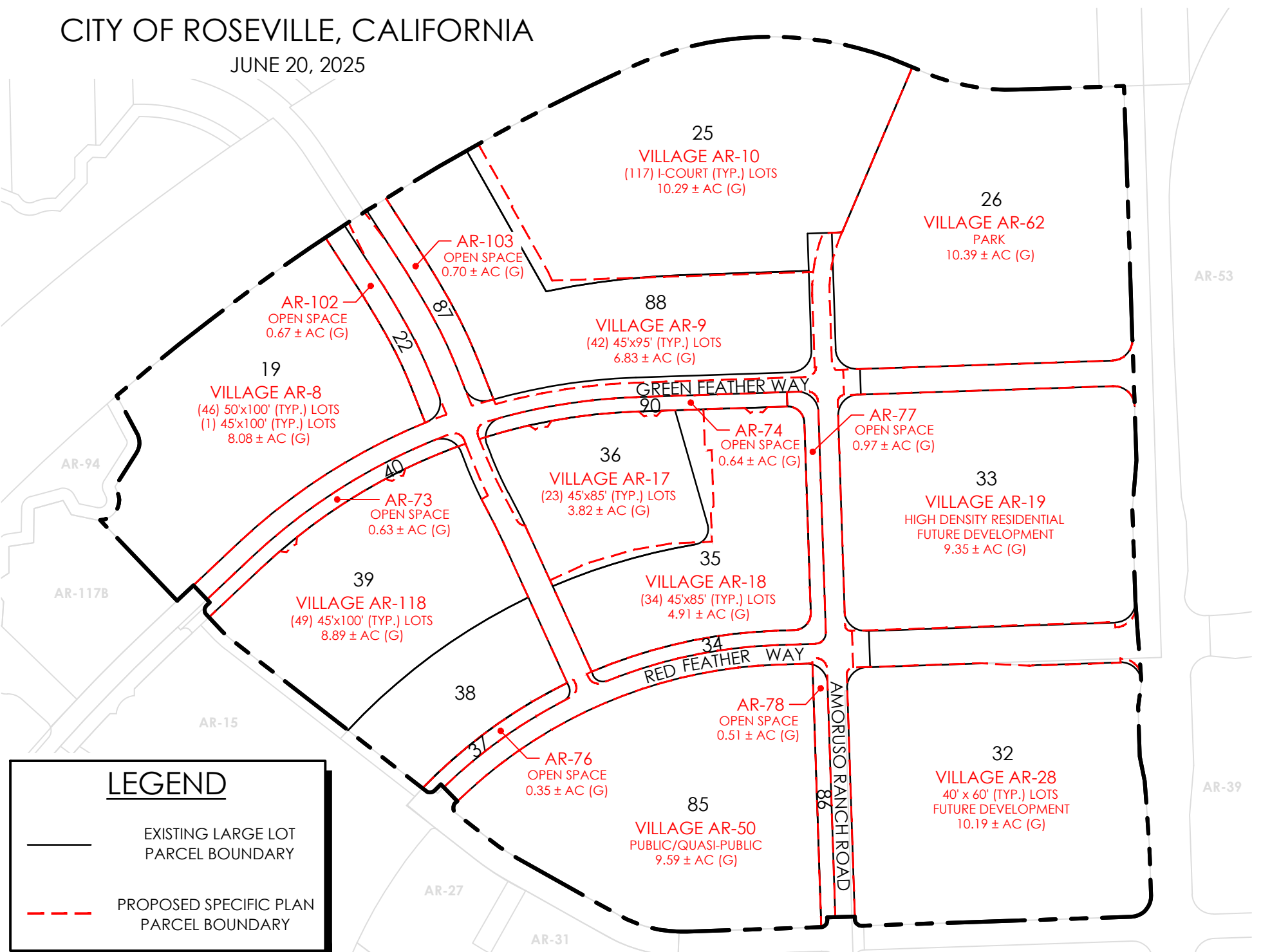
J:\3000-s\3651_AmorosoRanch_Visualization_Plane-B1\Planning\Civil_Entitlements\XEH-AR-B1_Placer Parkway Crossing.dwg 7/25/2025 2:56 PM Shane Lynch

PHASE 1 SUBPHASE B1 EXISTING AND PROPOSED VILLAGE BOUNDARIES AMORUSO RANCH CITY OF ROSEVILLE, CALIFORNIA

JUNE 20, 2025

LAND USE SUMMARY

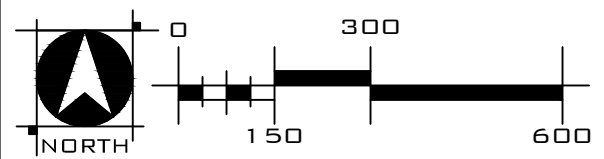
FINAL MAP LOT NO.	SPECIFIC PLAN PARCEL NO.	GENERAL PLAN DESIGNATION	SPECIFIC PLAN DESIGNATION	ZONING	DWELLING UNITS	EXISTING ACRES (G)	PROPOSED ACRES (G)	DENSITY
19	AR-8	LDR	LDR	RS	47	8.08	8.08	5.8
35	AR-18	LDR	LDR	RS	34	5.08	4.91	6.9
36	AR-17	LDR	LDR	RS	23	3.62	3.82	6.0
38, 39	AR-118	LDR	LDR	RS	49	8.85	8.89	5.5
88	AR-9	LDR	LDR	RS	42	6.26	6.83	6.1
SUBTOTAL					195	31.89	32.53	
25	AR-10	MDR	MDR	RS	117	10.53	10.29	11.4
32	AR-28	MDR	MDR	RS	-	10.17	10.19	-
SUBTOTAL					117	20.70	20.48	
33	AR-19	HDR	HDR	R3	-	9.33	9.35	-
SUBTOTAL						9.33	9.35	
22	AR-102	OS	OS	OS	-	0.64	0.67	
34	AR-77	OS	OS	OS	-	0.97	0.97	
37	AR-76	OS	OS	OS	-	0.33	0.35	
40	AR-73	OS	OS	OS	-	0.58	0.63	
86	AR-78	OS	OS	OS	-	0.49	0.51	
87	AR-103	OS	OS	OS	-	0.68	0.70	
90	AR-74	OS	OS	OS	-	0.59	0.64	
26	AR-62	P/R	P/R	PR	-	10.34	10.39	
85	AR-50	P/QP	P/QP	P/QP	-	9.59	9.59	
SUBTOTAL						24.21	24.45	
MAJOR RIGHT-OF-WAY 1						6.96	6.14	
MAJOR RIGHT-OF-WAY 2						-	2.38	2.52
SUBTOTAL						9.34	8.66	
TOTAL					312	95.47	95.47	
					DU	AC	AC	



LEGEND

— EXISTING LARGE LOT PARCEL BOUNDARY

- - - PROPOSED SPECIFIC PLAN PARCEL BOUNDARY



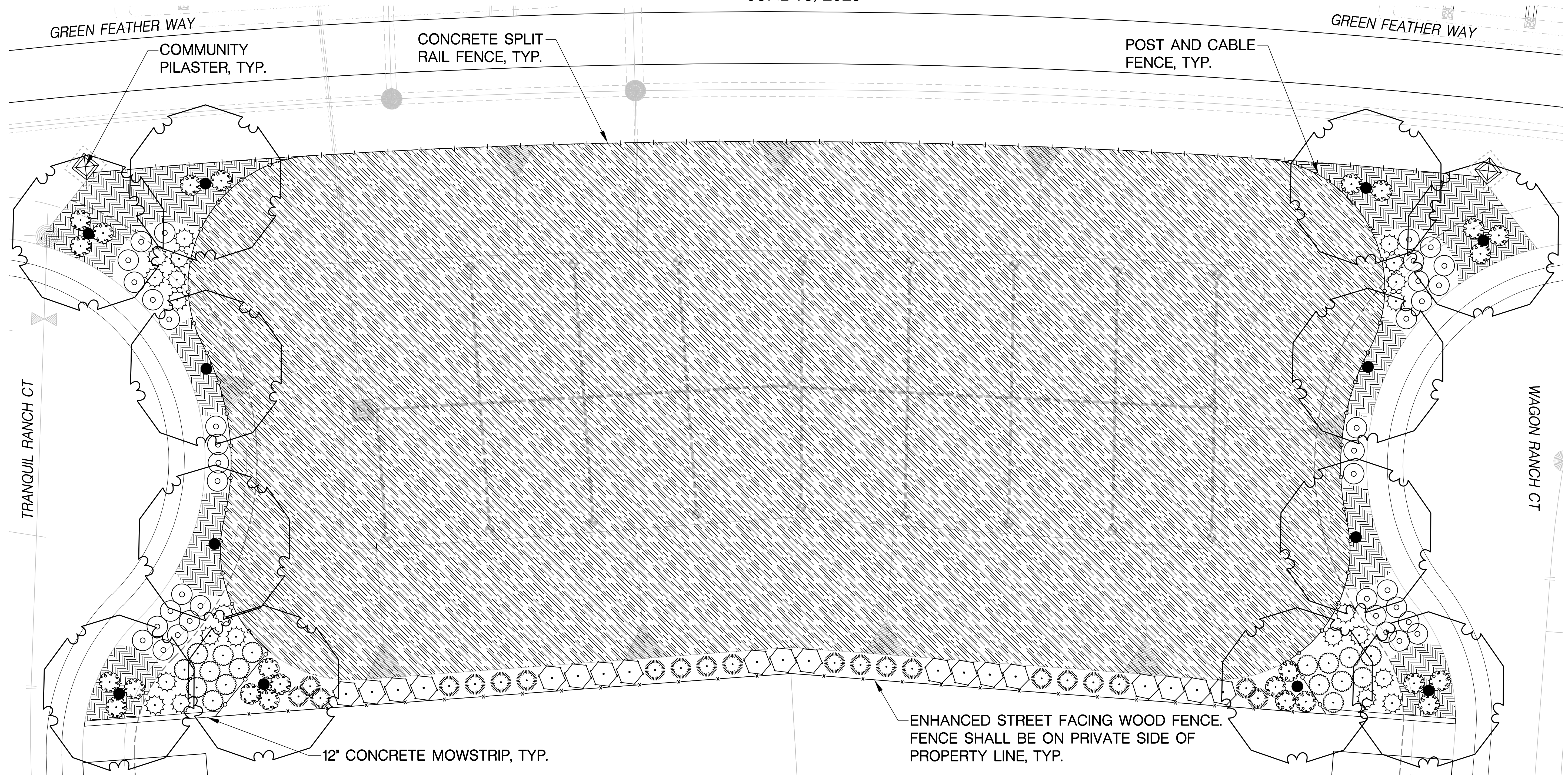
WOOD RODGERS
BUILDING RELATIONSHIPS ONE PROJECT AT A TIME
3741 Douglas Blvd., Ste. 150
Roseville, CA 95661
Tel 916.341.7760
Fax 916.341.7767

BASIN EXHIBIT TYPICAL

AMORUSO RANCH - PHASE B1

ROSEVILLE, CALIFORNIA

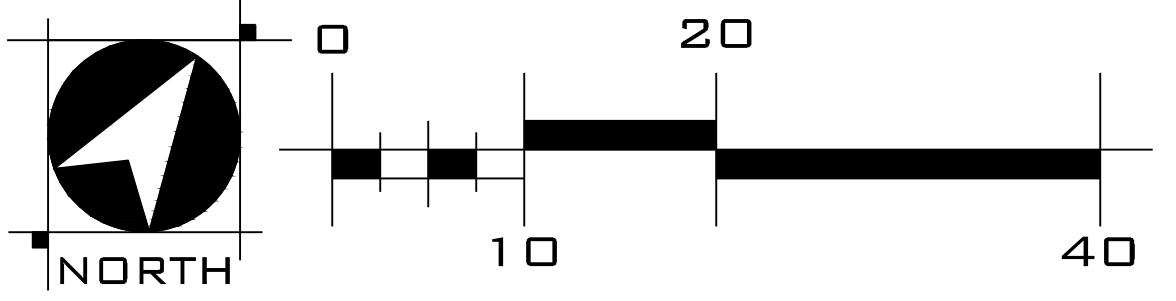
JUNE 13, 2025



NOTE: LIMITS OF FENCING AND CONCRETE MOW CURBS ARE DIAGRAMMATIC AND SHALL BE CONFIRMED WITH THE SPECIFIC LOT PLOT PLANS.

PLANT SCHEDULE

SYMBOL	BOTANICAL / COMMON NAME	SIZE	WATER USE	QTY	SHRUBS				
TREES					SHRUBS				
	ZELKOVA SERRATA / SAWLEAF ZELKOVA	15 GAL	MEDIUM	12		MUHLENBERGIA RIGENS / DEER GRASS	5 GAL	LOW	21
						RHAPHIOLEPIS UMBELLATA / YEDDA HAWTHORN	5 GAL	LOW	19
						SALVIA MICROPHYLLA 'HOT LIPS' / HOT LIPS GRAHAM SAGE	5 GAL	LOW	22
SHRUBS					GROUND COVERS				
	ANIGOZANTHOS FLAVIDUS / KANGAROO PAW	5 GAL	LOW	24		BACCHARIS PILULARIS 'PIGEON POINT' / PIGEON POINT COYOTE BRUSH	5 GAL	LOW	169
	CEANOTHUS MARITIMUS 'VALLEY VIOLET' / CEANOTHUS	5 GAL	LOW	37		BIOFILTRATION MIX / DELTA BLUE GRASS	SOD	LOW	21,656 SF
	CISTUS X HYBRIDUS / WHITE ROCKROSE	5 GAL	LOW	17		IRRIGATED			



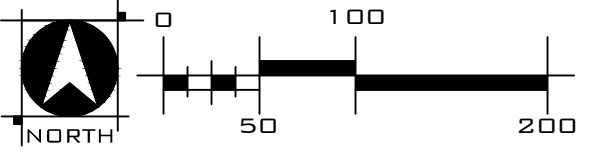
WOOD RODGERS
 BUILDING RELATIONSHIPS ONE PROJECT AT A TIME
 3471 Douglas Blvd, Ste 150 Tel 916.341.7760
 Roseville, CA 95661 Fax 916.341.7767

ATTACHMENT A
GARBAGE PICKUP LOCATIONS
AMORUSO RANCH PARCEL AR-10
CITY OF ROSEVILLE, CALIFORNIA
JUNE 20, 2025



LEGEND

 GARBAGE TOTER PICK-UP AREAS FOR HOUSES ON ALLEYS



WOOD RODGERS
BUILDING RELATIONSHIPS ONE PROJECT AT A TIME
3301 C St, Bldg. 100-B Sacramento, CA 95816
Tel 916.341.7760 Fax 916.341.7767

J:\3000-9\3651_AmorusoRanch\AmorusoRanch_Phase-B1\Planning\Exhibits\EXH_AR-B1_GarbagePickup.dwg 6/20/2025 1:26 PM Niko Wik

FIRE ACCESS ROUTE

AMORUSO RANCH B1

CITY OF ROSEVILLE

CALIFORNIA

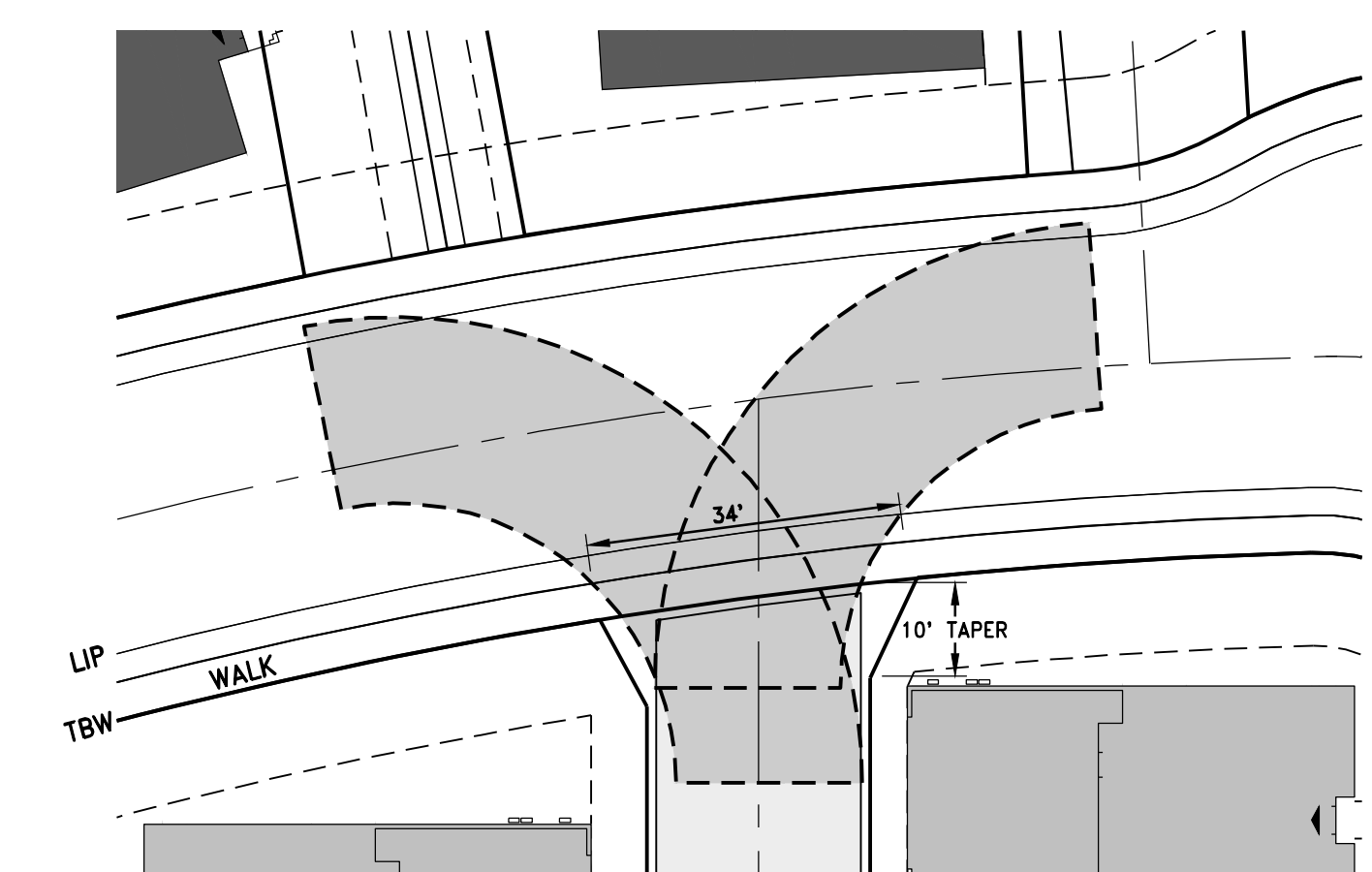
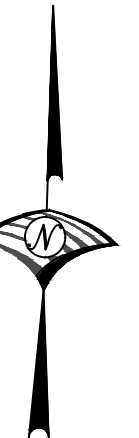
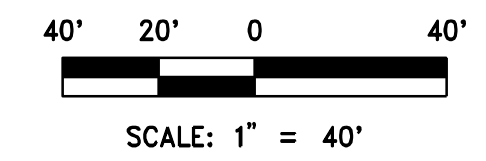
JUNE 20, 2025



LEGEND

- PROPOSED FIRE LANE
- FIRE LANE TURN TEMPLATE (SEE GENERAL NOTES FOR RADII)

NOTE:
BFC-BOTTOM FACE OF CURB (TYP)



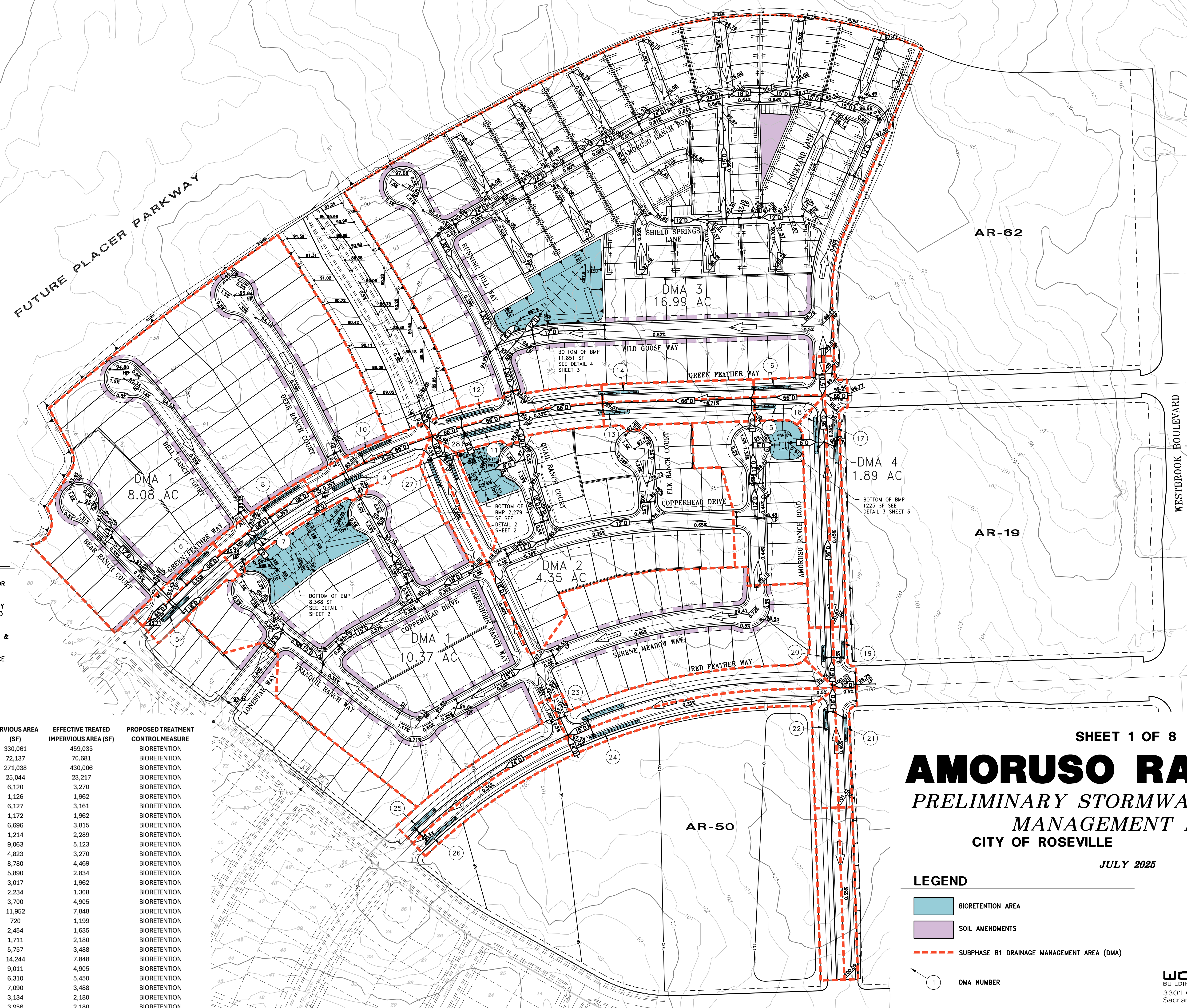
DRIVEWAY DETAIL

J:\3000-s\3051_AmorusoRanch\AmorusoRanch_Phase-B1M\Civil\Emblis\DR-002-AR-B1_Fire Access.dwg 6/20/2025 1:22 PM Mike Wik

NOTES

1. THIS EXHIBIT IS FOR PRELIMINARY PLAN PURPOSES ONLY. ALL DRAINAGE SYSTEM CHARACTERISTICS ARE TO BE VERIFIED PRIOR TO DEVELOPMENT.
2. THE PROPOSED GRADING DESIGN, TREATMENT LOCATION, UTILITY LAYOUT AND SIZES SHOWN ARE CONCEPTUAL AND SUBJECT TO MODIFICATION AS DESIGN PROGRESSES.
3. DMA 1 & 3 ARE DESIGNED FOR FLOW RATE TAB 3-7. DMA 2 & 4 ARE DESIGNED FOR INFILTRATION TAB 3-6.
4. AR 8 & 9 TO UTILIZE SOIL AMENDMENT IN FRONT YARD SPACE ONLY IN 10' PUE (EXCLUDING DRIVEWAY AREA).
5. STORMWATER QUALITY TREATMENT IS TO BE PROVIDED BY BIORETENTION BASIN. WITH THE EXCEPTION OF DMA'S 1 & 3 WHICH WILL HAVE THEIR WQV 100% REDUCED BY SOIL AMENDMENTS

DMA#	EXISTING		PROPOSED		EFFECTIVE TREATED IMPERVIOUS AREA (SF)	PROPOSED TREATMENT CONTROL MEASURE
	IMPERVIOUS AREA (SF)	PERVIOUS AREA (SF)	IMPERVIOUS AREA (SF)	PERVIOUS AREA (SF)		
1	0	803,266	473,205	330,061	459,035	BIORETENTION
2	0	189,577	117,440	72,137	70,681	BIORETENTION
3	0	740,627	469,589	271,038	430,006	BIORETENTION
4	0	65,393	40,349	25,044	23,217	BIORETENTION
5	0	12,632	6,512	6,120	3,270	BIORETENTION
6	0	7,183	6,057	1,126	1,962	BIORETENTION
7	0	12,683	6,556	6,127	3,161	BIORETENTION
8	0	7,287	6,115	1,172	1,962	BIORETENTION
9	0	14,429	7,733	6,696	3,815	BIORETENTION
10	0	8,833	7,619	1,214	2,289	BIORETENTION
11	0	19,505	10,442	9,063	5,123	BIORETENTION
12	0	15,726	10,903	4,823	3,270	BIORETENTION
13	0	18,091	9,311	8,780	4,469	BIORETENTION
14	0	13,454	7,564	5,890	2,834	BIORETENTION
15	0	7,021	4,004	3,017	1,962	BIORETENTION
16	0	7,324	5,090	2,234	1,308	BIORETENTION
17	0	18,937	15,237	3,700	4,905	BIORETENTION
18	0	25,784	13,832	11,952	7,848	BIORETENTION
19	0	4,957	4,237	720	1,199	BIORETENTION
20	0	5,842	3,388	2,454	1,635	BIORETENTION
21	0	8,779	7,068	1,711	2,180	BIORETENTION
22	0	12,836	7,079	5,757	3,488	BIORETENTION
23	0	32,607	18,363	14,244	7,848	BIORETENTION
24	0	22,484	13,473	9,011	4,905	BIORETENTION
25	0	23,652	17,342	6,310	5,450	BIORETENTION
26	0	16,443	9,353	7,090	3,488	BIORETENTION
27	0	11,188	8,054	3,134	2,180	BIORETENTION
28	0	10,454	6,498	3,956	2,180	BIORETENTION



SHEET 1 OF 8

AMORUSO RANCH B1

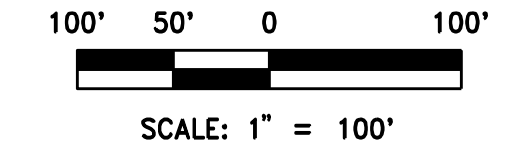
PRELIMINARY STORMWATER QUALITY MANAGEMENT PLAN

CITY OF ROSEVILLE CALIFORNIA

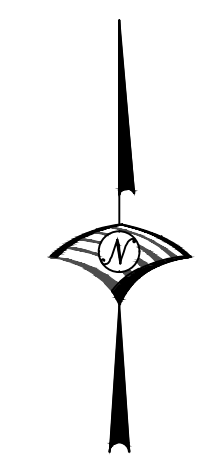
JULY 2025

LEGEND

- BIORETENTION AREA
- SOIL AMENDMENTS
- SUBPHASE B1 DRAINAGE MANAGEMENT AREA (DMA)
- DMA NUMBER



WOOD ROGERS
 BUILDING RELATIONSHIPS ONE PROJECT AT A TIME
 3301 C St, Bldg. 100-B Tel 916.341.7760
 Sacramento, CA 95816 Fax 916.341.7767



J:\3000-s\3651_AmorusoRanch_Visualization\Draw\Basin_Sizing_Analysis\001-EXH-DMA.dwg 7/25/2025 3:12 PM Brooke Arng